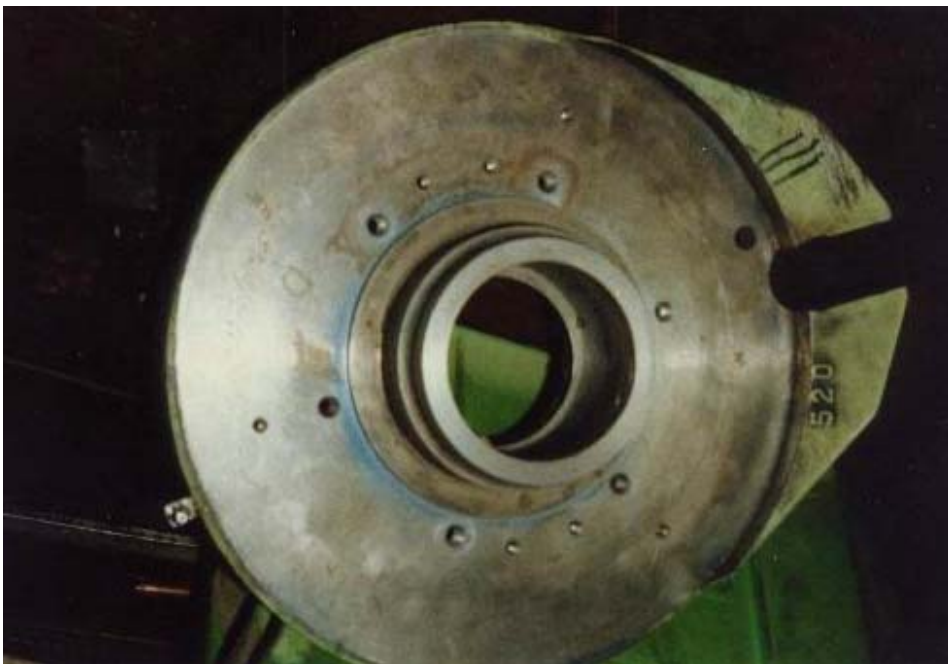




Worldwide repairs carried out with PolymerMetal®

REP-# 121



The bearing seat of a brake shield was reconstructed to its original size with Molymetall. First 2 mm were turned down and then Molymetall was applied. After total curing (appr. 12 h) the size of the original diameter of the seat was reached by turning down again.

MultiMetall
the MetalExistenceCompany®